

SHAKEOUT



WESMAN

FOUNDRY EQUIPMENT

WF-SERIES

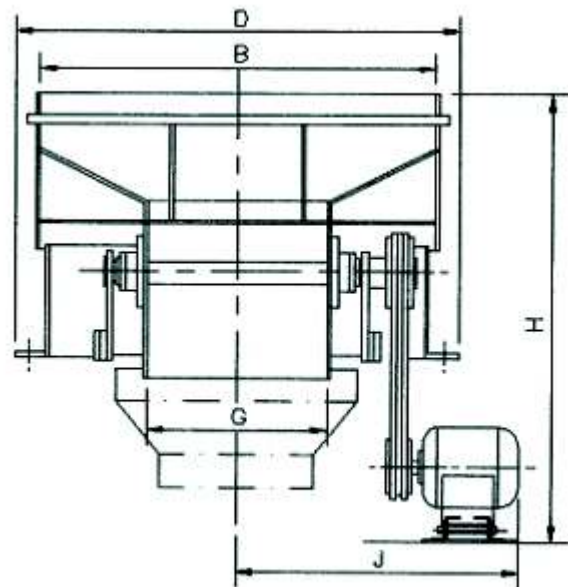
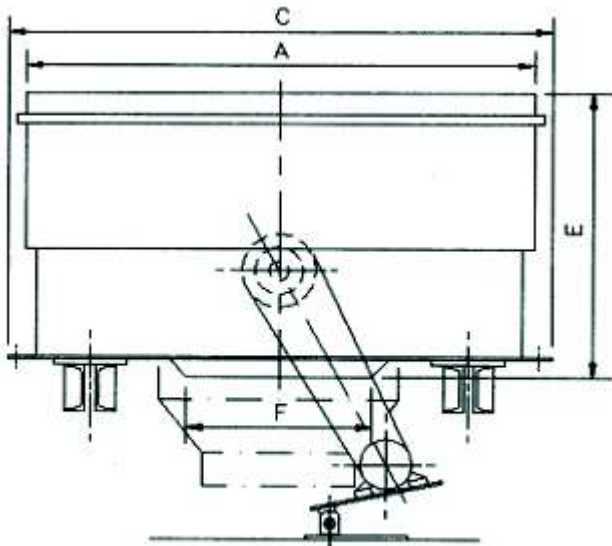
WESMAN SHAKEOUTS are designed for continuous duty to separate castings from sand, mould and sand from flasks, and cores from castings. It consists of a top deck made of thick steel plate with drilled holes, floating on heavy-duty springs resting on a supporting structure. The floating top frame is shaken violently either by an eccentric shaft drive mechanism or by a vibromotor system. A fabricated guide chute directs the sand to an oscillating metal trough conveyor or other equipment placed below the shakeout.



STAR FEATURES

- Robust construction
- Suitable for difficult to remove sand
- Designed for continuous duty
- Top frame is stress-relieved for longer life

A rotating eccentric shaft with eccentric weights at each end is fitted to the top frame with high-quality anti-friction bearings. Optionally, two unbalanced vibromotors can be mounted on the top floating frame, fitted opposite each other.



SHAKEOUT WITH ECCENTRIC SHAFT

MODEL	CAPACITY	A	B	C	D	E	F	G	H	J	POWER RATING
WF-2	1-2 TONS	1500	1000	1740	1504	720	730	1230	970	970	5 HP
WF-4	3-4 TONS	1800	1200	2060	1540	760	850	1450	1000	1000	7.5 HP
WF-7	5-7 TONS	2400	1800	2480	1880	840	1200	1730	1245	1245	15 HP
WF-10	8-10 TONS	3000	2000	3080	2100	865	1360	1730	1360	1360	20 HP

THE WESMAN ENGINEERING CO PVT LTD
 WESMAN CENTER, 8 MAYFAIR ROAD, KOLKATA 700019
 TEL: +91 (33) 40020300 FAX: +91 (33) 22908050
 EMAIL: foundry@wesman.com WEBSITE: www.wesman.com
 Information in this document is non-binding and subject to modification

REGIONAL SALES AND SERVICE OFFICES:
 ■ MUMBAI (22) 28509521 ■ NEW DELHI (11) 26431723
 ■ CHENNAI (44) 28263581 ■ BANGALORE (80) 22225760
 ■ PUNE (20) 46703004 ■ AHMEDABAD (79) 30027355
 ■ HYDERABAD (40) 66312686 ■ NAGPUR (712) 6464349